

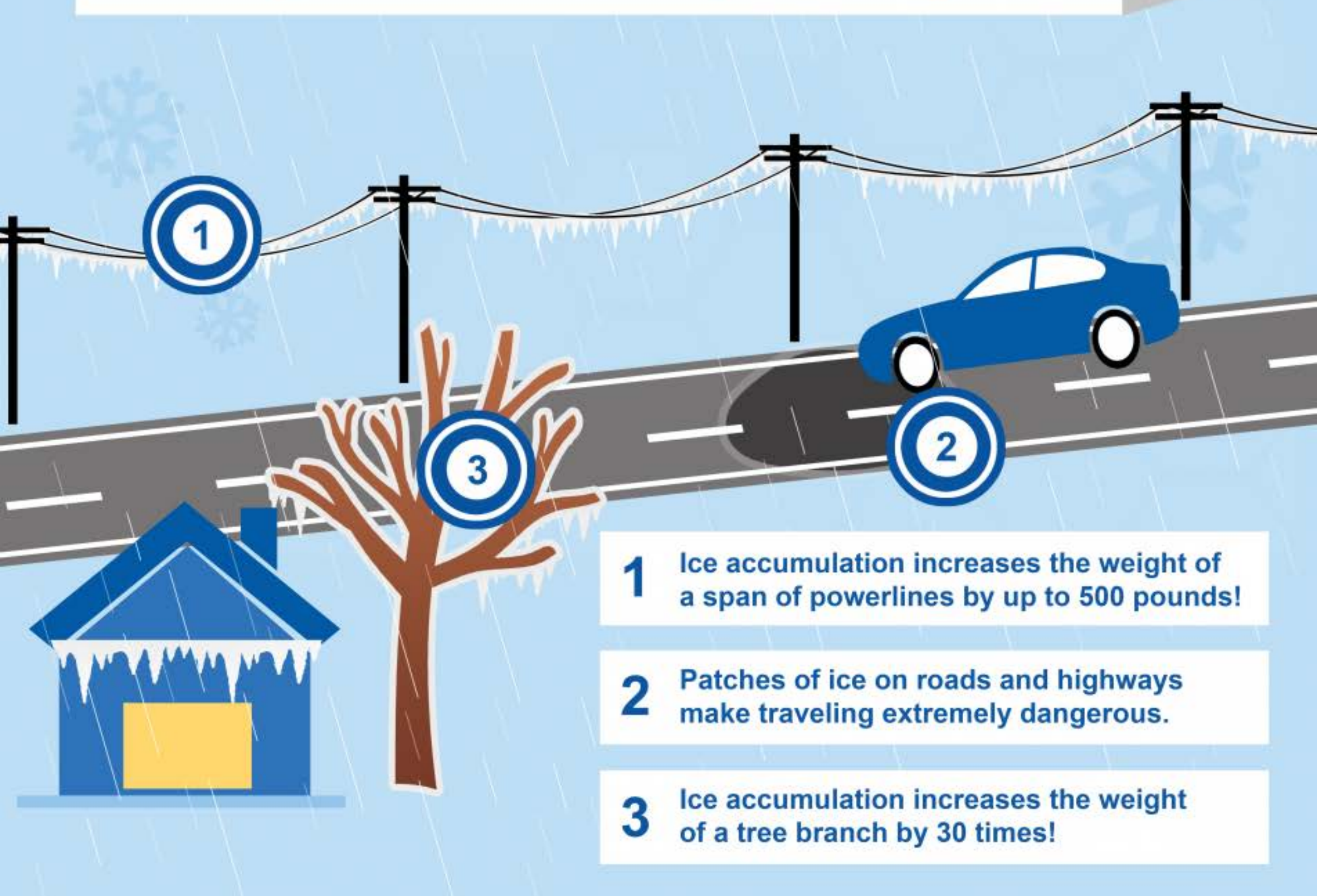


Understanding Winter Weather



What is FREEZING RAIN?

Freezing rain is liquid precipitation that freezes on contact with cold surfaces as it enters a shallow layer of temperatures at or below 32°F near the surface. This creates a dangerous coating of ice on roads, walkways, trees and power lines.



- 1** Ice accumulation increases the weight of a span of powerlines by up to 500 pounds!
- 2** Patches of ice on roads and highways make traveling extremely dangerous.
- 3** Ice accumulation increases the weight of a tree branch by 30 times!

For more information on winter weather safety, visit:
weather.gov/winter

